

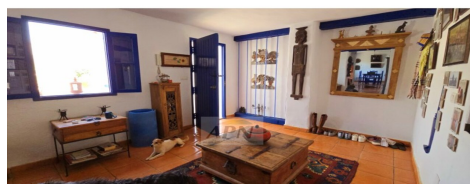


MLS66451P



Country House in Alora

€420,000



5



3



275m²



900m²



Beautiful property built in a semi- rural location in the village of Bermejo, just ten minutes driving in between Alora town and El Chorro.It offers both a family home together with a successful rural tourism business.It is built on a 900m2 urban plot and the building extends to 275m2 distributed over 2 levels.The property offers a spacious and comfortable, two bedroom accommodation where the current owner lives, plus a two bedroom guest apartment and a one bedroom guest apartment. The property has been refurbished to mix contemporary and traditional features together. The main accommodation currently offers a welcoming reception room, an Andalucian style kitchen, dining area, cosy sitting room, 2 (Ask for More Details)